



ICELAND

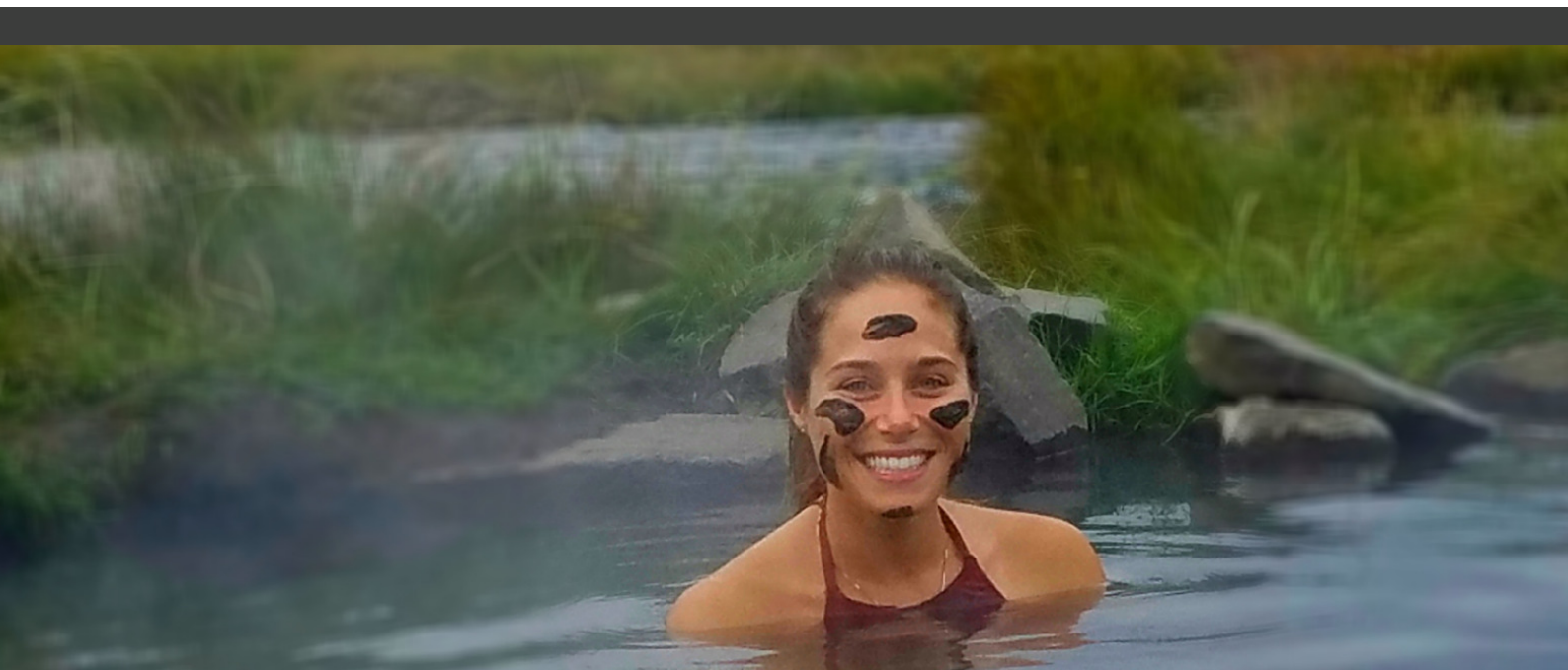
Student Exploration

WWW.BEYONDTHEMAP.ORG



CUYAHOGA VALLEY CHRISTIAN ACADEMY

Document prepared by: Cody Bliss



GENERAL TRIP INFO



Group: Cuyahoga Valley Christian Academy

Group Coordinator: Christina & Dave Kamp

BTM Trip Coordinator: Cody Bliss

Participants: Min:8/Max:40

Trip Length: 6 nights/7 days

Trip Dates: March, 2020

Cost: *Price breakdown below*





ITINERARY OVERVIEW

Day 1: Fly to Akureyri, Iceland. Travel to local accommodations. Group dinner & orientation.

Day 2: Humpback whale tour. Sunset hike and geology lesson in Vatnajökull National Park. Search for the northern lights.

Day 3: Geothermal and waterfall investigation and caldera hikes. Soak in natural hot springs.

Day 4: East fjords beaches, puffins and reindeer walks. Evening lesson on glaciers.

Day 5: Glacier hike and ice cave hike and research methods. Black sand beach lesson.

Day 6: Black sand beaches and cliffside hikes.

Day 7: Hike to waterfalls, natural hot springs and walking tour of Reykjavik.

Day 8: Depart Reykjavik, Iceland

ITINERARY



DAY 1: WELCOME TO ICELAND!

Our trip begins in Akureyri where your BTM director will be waiting for the group. Our private transportation will take us to our accommodations. If time allows, we will have a walking tour of the city before dinner & orientation. This trip includes a combination of hotels, guest houses & hostels.

DAY 2: HUMPBACK WHALES & CANYONS

Hop aboard a whaling ship turned eco-tour vessel! The melting snow and flowing rivers supply a plethora of mineral-rich nutrients to the waters in northeast Iceland attracting dozens of whales to the area. Skirt the Arctic Circle in search of humpback and blue whales. Spend the remainder of the day hiking through the unique Asbrygi Canyon in the Vatnajökull National Park. Enjoy the sunset atop the canyon walls while learning about the formation of Iceland's unique landscapes.

DAY 3: GEOTHERMAL HOT SPRINGS

Iceland has been nicknamed "the land of fire and ice" and for good reason! Today we are awarded with pools of bubbling, turquoise waters, steaming vents and naturally heated hot springs. At first glance, it appears as though we are on a completely different planet all together! A series of short hikes will lead us through mesmerizing geothermal features. Learn about how these are formed and their multiple uses in the Icelandic communities.



GLACIER RESEARCH METHODS

ITINERARY



DAY 4: EAST FJORD BEACHES & WILDLIFE

The east fjords are one of the least visited regions in Iceland, yet, contain some of the most unique environments and wildlife in the entire country! Today we road trip through the winding ridge lines of the fjords. Along the way we stop to discuss and explore the unique coastal features while also keeping a close eye out for wild reindeer and the beloved puffin perched on the cliff sides. Tonight we begin discussing glacier formation.

DAY 5: GLACIER HIKE & ICE CAVES

Strap on your crampons and grab your ice ax because you're in for an adventure today! Today we join local glacier explorers that are researching the glaciers throughout Iceland. Spend the day collecting data on different sections of the glacier while also gaining a better understanding for how these glaciers have and continue to shape Iceland. Take an in-depth look at the inside of the glacier to discover volcanic ash frozen in time from the previous eruptions. Finish the day having a traditional Icelandic dinner with our new friends.

DAY 6: BLACK SAND BEACHES

Follow the glacier to the glacier lagoon where it becomes an iceberg before continuing out to sea. Watch as sea lions dip and dart between the massive ice boulders. Continue the day with hikes along black sand beaches and cliffside trails.



EXPLORE UNIQUE ECOSYSTEMS

ITINERARY



DAY 7: BLACK SAND BEACHES

Water seeps from each and every seam in Iceland creating waterfalls in all directions. Today we explore a few of the most famous waterfalls in all of Iceland. There is no better way to understand the connection between land and sea than following a river until it dumps into the ocean. The remainder of the day will be spent exploring the eclectic, northern most capital of the world- Reykjavik! A final group dinner and trip recap will end the night.

DAY 8: THE END OF THE JOURNEY

Unfortunately, all good things must come to an end...or do they! Although we head home today, the sights and experiences from Iceland will be forever a part of your life! Depart from Reykjavik, Iceland.





HANDS-ON LEARNING

LEARNING OUTCOMES



- Understand Iceland's geothermal activity and significance for human development throughout Iceland.
- Understand the connections between Iceland's terrestrial and marine ecosystems through the examination of the lava fields, tundras, glaciers, geothermal areas, rivers and coastlines.
- Understand the environmental influence of the Gulf Stream and Arctic currents on the local weather and marine organisms.
- Understand the balance between human development, sustainable tourism and environmental protection from a local and global perspective.
- Understand scientific processes through hands-on research and field methods.
- Understand real-life research projects that are currently being investigated while also networking with local scientists.
- Understand the ecology and conservation of whale populations in Iceland.
- Understand how early settlers (Vikings) survived in Iceland's rugged landscapes and how the environment shapes modern day culture.
- Understand the unique island geology, volcanic activity, formation and recession of glaciers and the presence of the Northern Lights.

TERMS & CONDITIONS



Price Includes

All expenses outlined in itinerary, including:

- Pre-Trip Research, Planning & Logistics
- Pre-Trip Curriculum/Educational Materials
- Accommodations (double occupancy)
- Private Local Transportation
- Activity & Entrance Fees, Permits and Associated Tips
- All Meals: Breakfast, Lunch & Dinner
- Personal BTM Trip Director (CPR/Lifeguard/First Aid certified)
- Local Biologist Guides
- Personalized Trip Webpage
- Complimentary Teachers/Chaperones (1 complimentary:8 students)
- A trip of a lifetime!!

Price Does Not Include

- Expenses of personal nature both prior to departure as well as during the trip including additional snacks and souvenirs.
- Roundtrip airfare to Iceland (can be arranged upon request)

Participant Abilities

Fitness level: moderate. Participants will be outside and exposed to outdoor conditions in a cold, tundra environment. A few activities will require walking for extended periods of time on uneven surfaces. Feel free to contact us with any questions or concerns.

PAYMENT DETAILS



Trip Cost:

\$2600 per person (based on 24-31 travelers)

\$2700 per person (based on 16-23-travelers)

\$2800 per person (based on 8-15 travelers)

Deposits:

\$400 deposit per person is due to reserve dates. A monthly payment plan will be scheduled once the trip is booked.

I have read and agree to the terms and conditions approved in the contract.

Authorized Trip Coordinator:

Printed Name: _____

Signature: _____

Date: _____

Beyond the Map Trip Representative:

Printed Name: _____

Signature: _____

Date: _____



BEGIN YOUR JOURNEY TODAY!

Email: info@beyondthemap.org

Ph 1: 724-757-6474

Ph 2: 954-772-7800

Follow Us @beyondthemaptravel



BEYONDTHEMAP.ORG

Details & Policies

Cancellations:

The trip coordinator agrees to notify Beyond The Map (BTM) with written notice of cancellation **90** days prior to the trip date. Cancellations less than 90 days prior to the trip date will be charged the remaining balance of the trip. Any deposits paid prior to the cancellation are non-refundable.

Refunds:

The trip coordinator agrees to notify BTM with written notice of any change in the final numbers **60** days prior to the trip date. Refunds are based on the final balance due, excluding deposit(s). No refunds will be issued for participant absences if notification is received after the date listed above. The group will be responsible for paying the estimated minimum balance based on the contracted minimum as stated in the contract. Therefore, no refunds will be issued if final numbers fall below the contracted minimum. An adjusted invoice will be provided to account for additional participants above the contracted minimum.

Deposits

Initial deposit is based on the contracted minimum and is required to secure trip dates. **All deposits are non-refundable.** A custom payment schedule will be determined by BTM and the group leader and listed in the contract. If deposit is not received by the due date noted in the contract , the trip dates will be released and the contract will be voided.

Weather & Uncontrollable Events:

Many of our trips run regardless of the weather conditions; however, in the event of an extreme weather event or safety concern BTM will determine if the trip cannot proceed. If this were to occur, the trip would be rescheduled and no refunds will be issued.

Release Forms & Other Documents:

In many instances, release forms and other documents are required prior to the trip. BTM will be sure to provide ample time for delivery and return of these documents to each traveler. In the event that a traveler does not return the documents in the allotted amount of time, there is a chance that he/she may be denied access to an activity or experience.

Details & Policies

Dietary Restrictions:

Various BTM trips require prior meal planning for the group. BTM will be sure to provide ample time to request special dietary needs or restrictions prior to the trip. In the event that the traveler has failed to respond in the allotted amount of time, there is a chance that he/she will not have the appropriate rations during the trip and will be responsible for supplying their own if need be.

Accommodations:

Most BTM trips require prior planning to determine room configurations. BTM will be sure to provide ample time to request special room configurations prior to the trip. In the event that the traveler(s) have failed to respond in the allotted amount of time, there is a chance that he/she will not be given the appropriate room configurations requested and will be responsible for any changes that may be necessary.

Cut-Off Date:

The minimum number of participants must be reached by the date in the contract. If the school has not reached the contracted minimum number of participants by the cut-off date, BTM will release the respective trip date(s).

Roster:

Must be received **30** days prior to the trip. If the trip has exceeded the contracted minimum, an updated invoice will be provided.

Contracted Minimum and Maximum Participants:

The price is based on a minimum and maximum number of participants. The minimum number of participants must be reached by the contracted cut-off date in order for the trip to occur. The final cost of the trip is subject to change if it falls below the contracted minimum or above the maximum number of participants.

Please Make Checks Payable to:

Beyond the Map

3440 NE 12th Avenue

Oakland Park, FL 33334